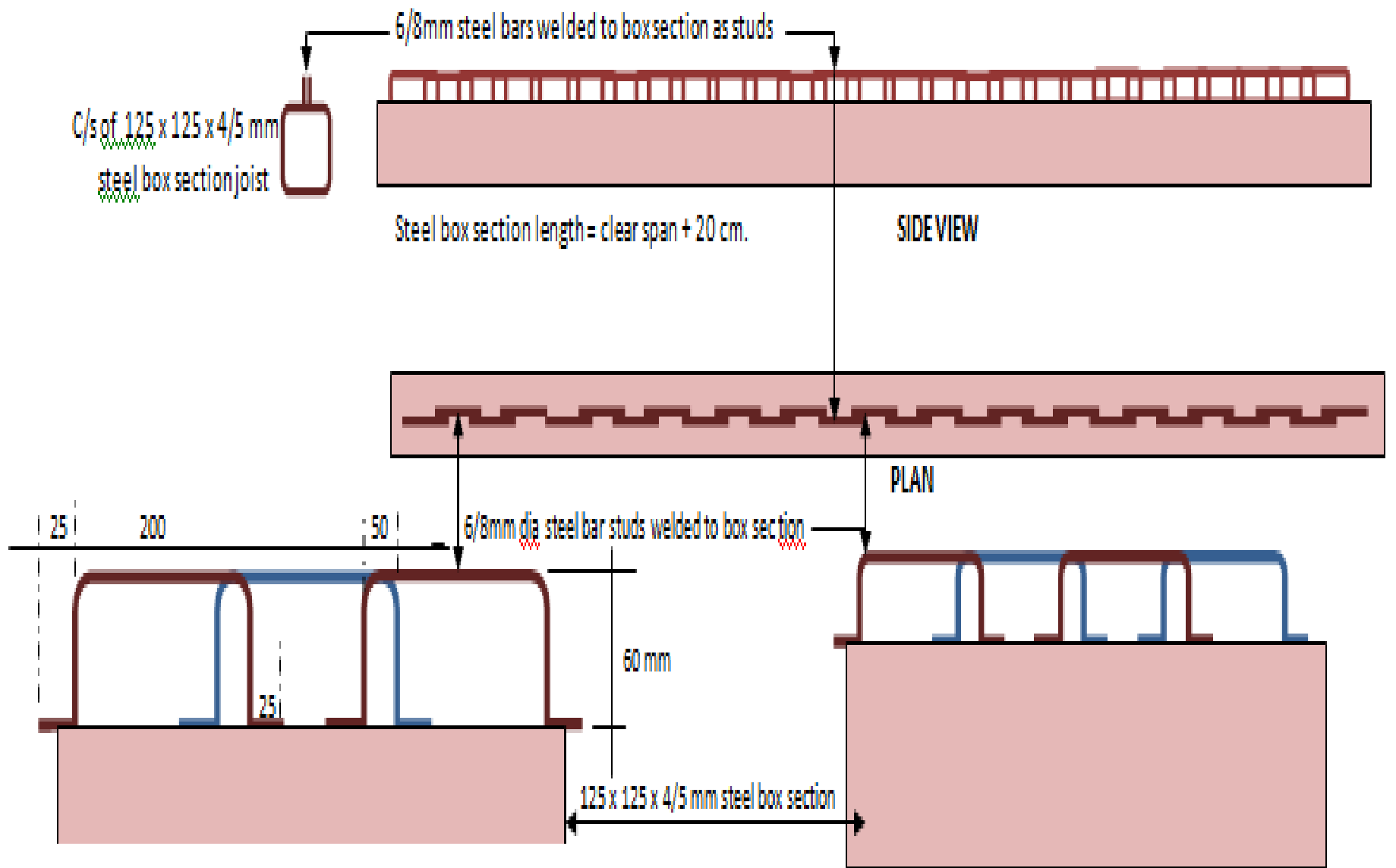


Steel Box Section as Joist for RC Plank Roof

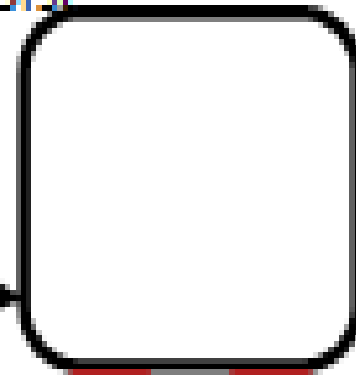
Why Steel Box Section

- The partially precast RCC joist for RC Plank Roof is heavy (About 200Kg)
- Difficult to cast, transport and assemble at site
- Steel Box section (125 x 125 x 5mm) is readily available in market
- Weight is only about 80 Kg
- Easy to fabricate
- Better finish
- Fan-hook can be welded



Steel box section Joist

Painted inside and
outside with Red
oxide paint 2 coats
and ends closed

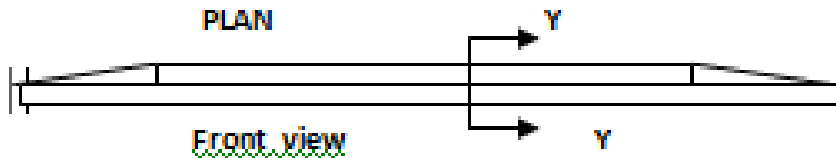
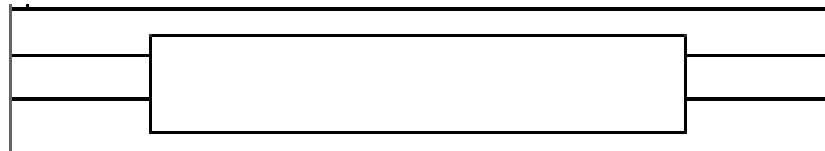


Min 12 mm dia steel bar
Fanhook welded

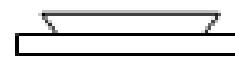
Modified RC Plank and steel box Joist system

- We are using 8mm dia bars and 65mm thickness
- So the span can be increased to 180 cm
- This will reduce construction cost and labour
- The house plan needs to be modified slightly to eliminate wastage because Box sections are available in 6m lengths

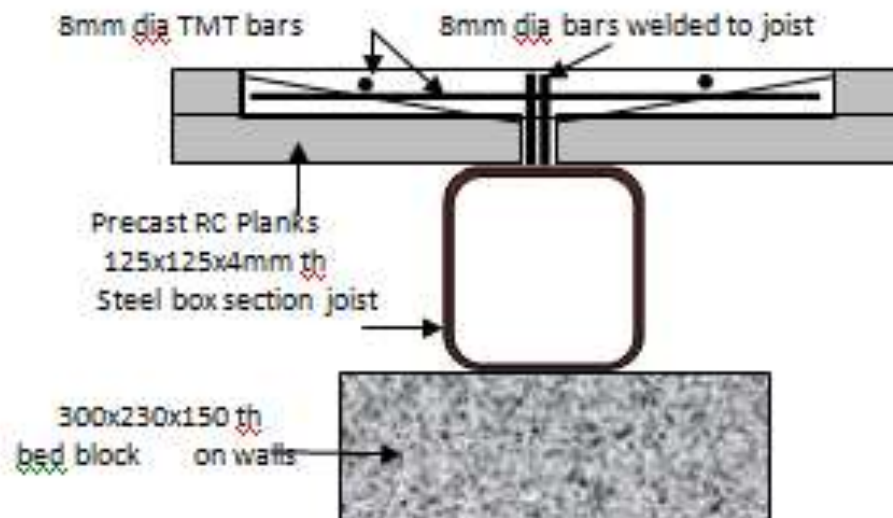
RC Plank size 1800x330x65mm size



3 nos 8mm TMT main bars 1780 long
with hooks on both sides and cross bars 300mm long at 200c/c



Cross section Y-Y



Revised Plan with Steel Box section Joist and RC Planks

